

Notice of Public Meeting

There will be a public meeting to discuss the possibility of a new community hall in Rocanville. Everyone is invited to attend on Thursday Nov 13th at 7:00 at the Catholic Church.

This meeting will set the direction the hall committee is headed. Once started in a direction, it will be cost prohibitive to change later. Please attend and make your voice heard.

As many of you have heard there has been an ad hock committee formed to look at building a new community hall in Rocanville. The initial committee consists of:

- Kathy Brown
- Daryl Fingas
- Steve Fortney – Chairperson
- Jennifer Kingdon
- Kevin Kingdon
- Chantelle Ollivier
- Herb Park
- Murray Reid

To date five meetings have been held and the following plan of action has been developed:

Generate an initial floor plan and location of hall	80% complete
Advise PotashCorp we will be seeking corporate donation	Complete
Hold public meeting to get input and preliminary approval for building layout and location	November 13th
Incorporate feedback from public and make changes to layout and location	Late November
Contract architects to design building. Committee will apply for grants, determine final cost of building, and develop a funding plan	December to April
Hold community meeting to outline detailed funding plan. Plan will encompass: <ul style="list-style-type: none"> • Grants • Fundraising • Corporate Donations • Contribution from Town of Rocanville • Contribution from the RM of Rocanville 	Mid April
Determine if project is viable	Late April
Begin construction of community hall	Mid May
Hall completion	December 2015

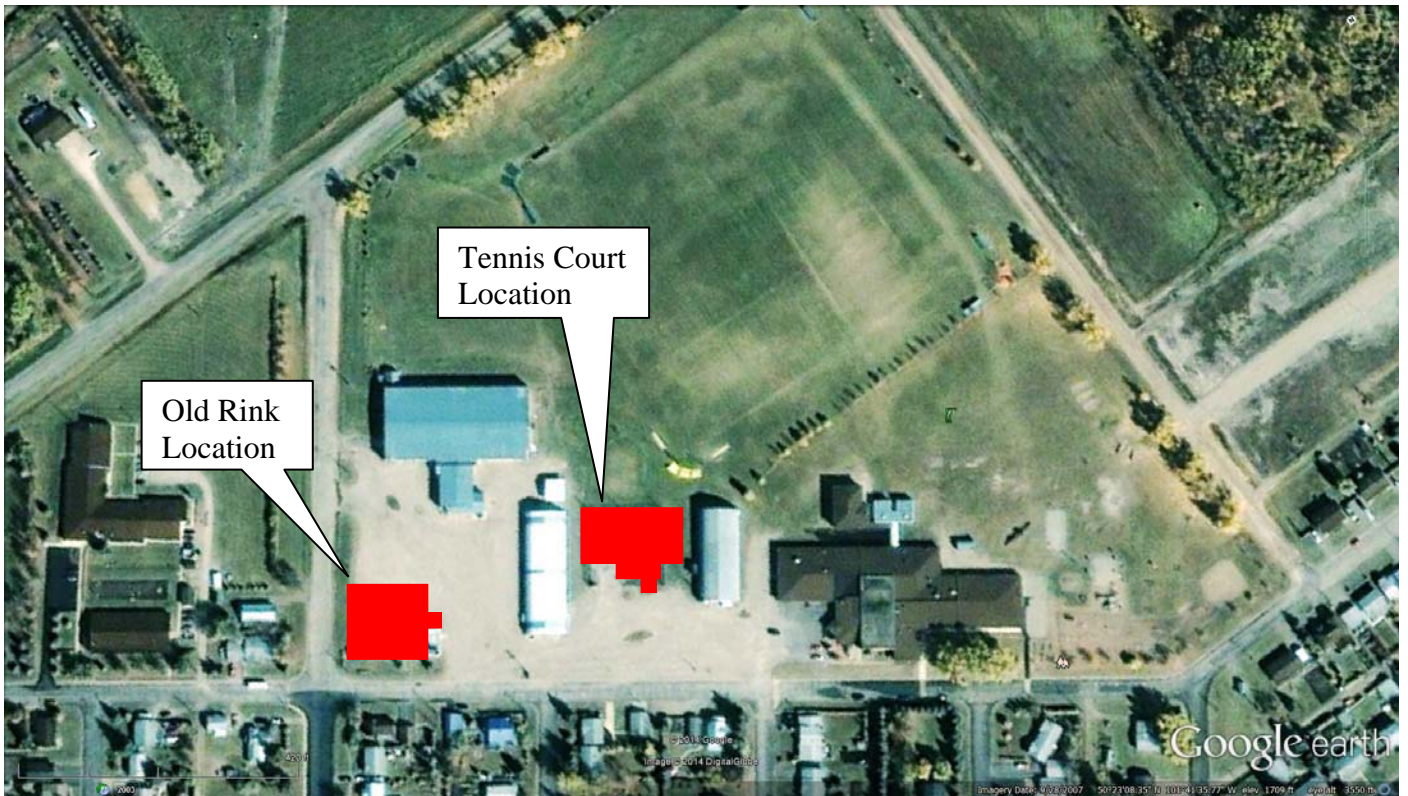
It appears that the funding is going to be a combination of:

- Funding from the town of Rocanville
- Funding from the RM of Rocanville
- Community Fundraising
- Corporate and government donations and grants

The committee is proposing a multi use hall for the community. The hall can be used for:

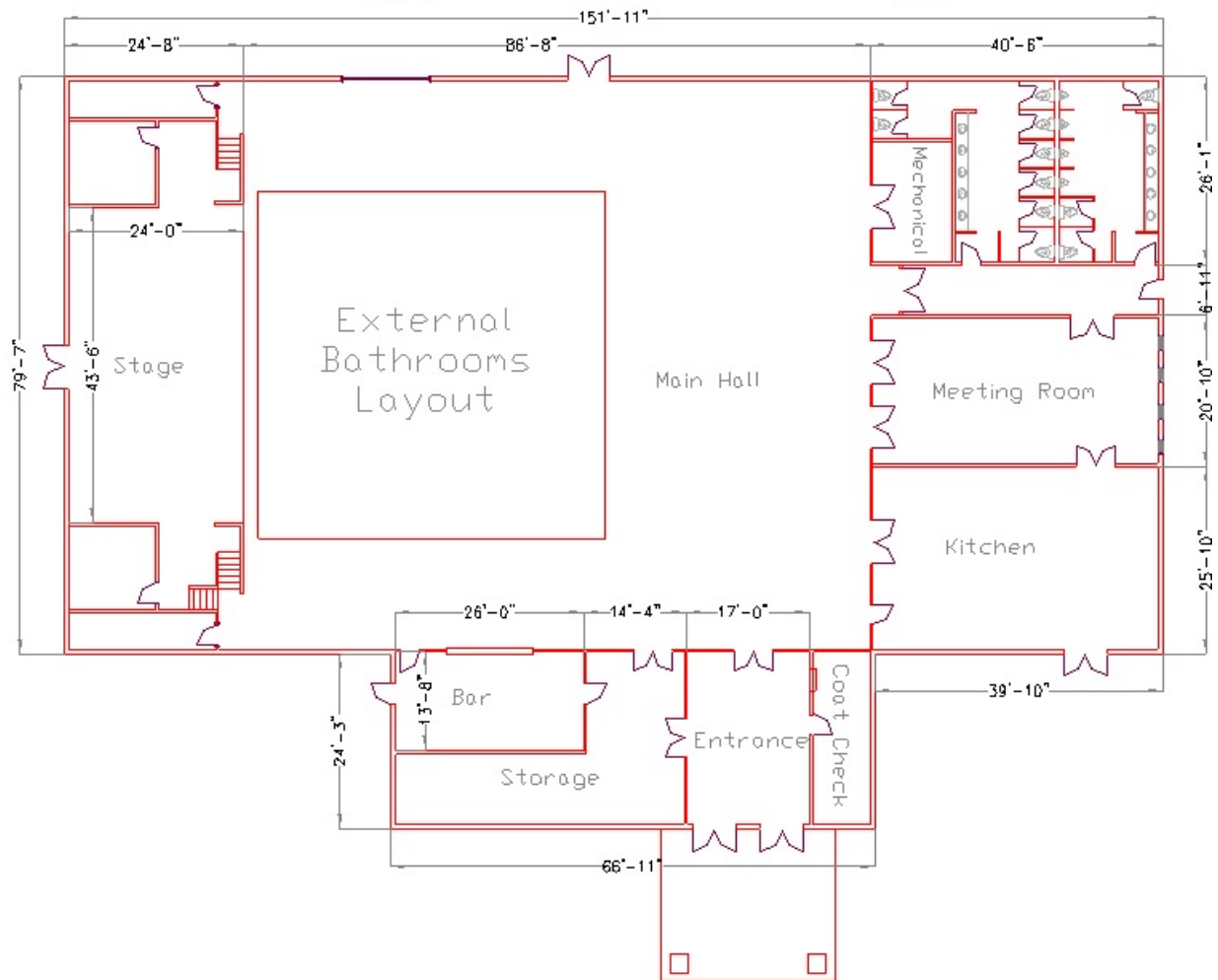
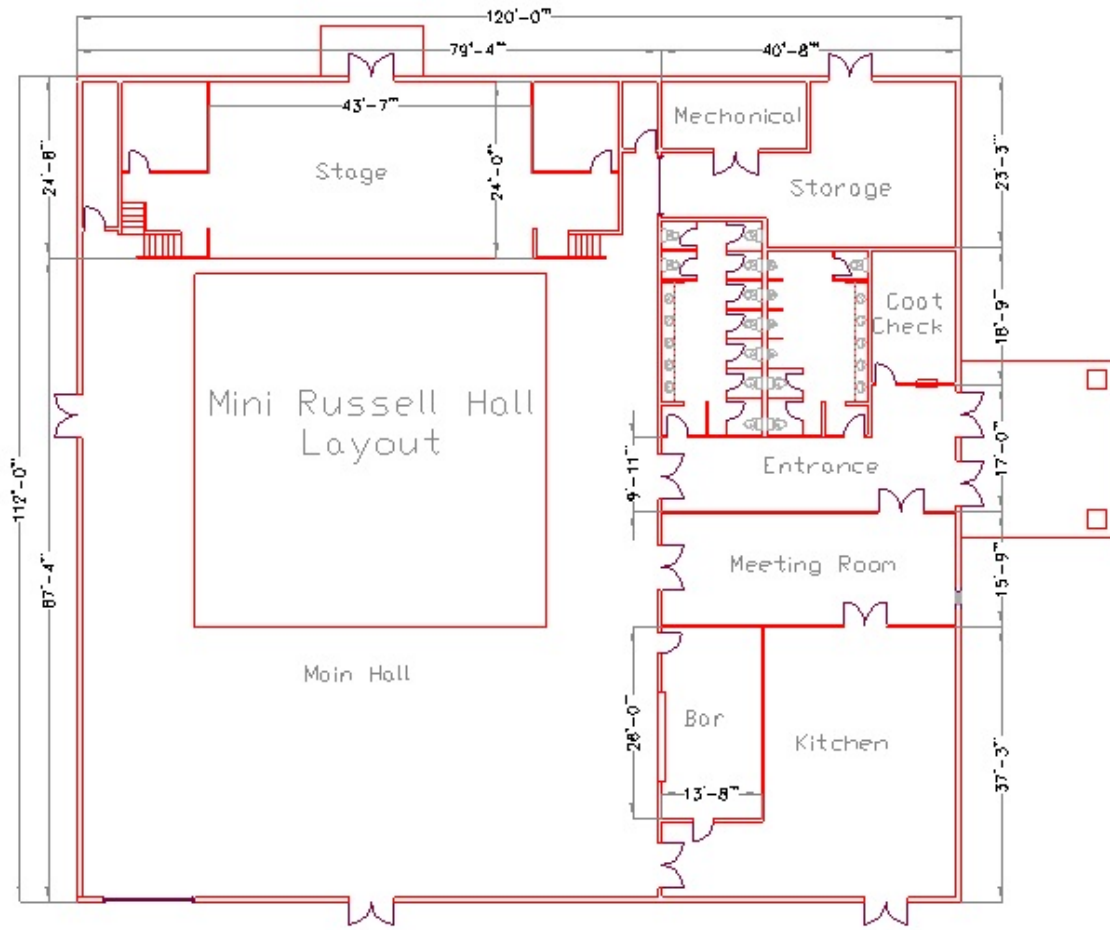
- Weddings
- Dances
- Funerals
- Volleyball
- Basketball
- Badminton
- Stage Presentations
- Dance
- Exercise

The following 2 ½ pages present two options for the proposed community hall:



The following table identifies the main strengths and weaknesses for each location:

	Old Rink Location	Tennis Court Location
Parking	More parking close to hall If event is on at either rink, parking space may be used Eliminates some of the parking spaces currently available	Limited parking close to hall More overall parking available
Utilities	Utilities are all close	Utilities must be brought on site
Location	On main street, enhances appearance of main street, but front is pointed away from main street	Close to ball diamonds Can use existing BBQ area Activities in and around the hall have less impact on residents, i.e. noise from band, inebriated patrons
Additional Costs	Must demolish old rink lobby foundation Overhead power lines must be moved	



The following table identifies the main strengths and weaknesses for each layout:

	Mini Russell Hall Layout	External Bathrooms Layout
Bathrooms	No access to bathrooms without opening the hall Available as soon as entering the hall	Accessible to the ball area without opening the main hall Located a long way from the main entrance
Interruptions	Enter and exit from the center of the hall Bathrooms are at the center of the hall Bar is at the rear of the hall	Enter and exit from the rear of the hall Bathrooms are at the rear of the hall Bar is close to the front of the hall
Miscellaneous	Storage area can be used for people waiting to get on the stage, i.e. bridal party, grads, performers	
Overall Size	13,440 sq feet	13,712 sq feet
Stage, Main Hall, Bar, Mechanical	Exactly the same	Exactly the same
Bathrooms	7 men's, 9 ladies	7 men's, 8 ladies
Entrance and Coat Check	686 sq feet	694 sq feet
Meeting Room	599 sq feet	792 sq feet
Kitchen	1,095 sq feet	993 sq feet
Main Storage	650 sq feet	582 sq feet

If we build the hall at the Old Rink Location, only the Mini Russell Hall Layout is suitable. If we build the hall at the Tennis Court Location, either layout is suitable. The main advantage of the External Bathrooms Layout is that the bathrooms are close to the ball diamonds and can be used without opening up the hall.

Please attend the meeting on Thursday November 13th.

If you are unable to attend, please send comments to Steve Fortney at 645-2710 or email s.fortney@sasktel.net before November 17th.

For comparison purposes we have listed the dimensions of various venues that people are familiar with:

	Main Hall	Square Feet	Stage	Square Feet
Proposed Community Hall	87' x 79'	6,873	43' x 24'	1,032
Rocanville Curling Rink	140' x 56'	7,840	40' x 16'	640
Rocanville Gymnasium	82' x 48'	3,936	35' x 25'	875
Moosomin Hall	89' x 67'	5,963	40' x 30'	1,200
Russell Hall	80' x 100'	8,000	50' x 30' ??	1,500

P.S. Early next week we will be putting up stakes to show where the corners of the buildings will be (weather permitting). Please drive by and have a look.