



About Single Stream Curbside Recycling

All approved recyclables can now be placed together in your recycle cart. Accepted materials are listed below. Other materials for recycling will be added in the future as the necessary processing equipment is put into place. The recycle cart will be picked up every 2nd week, a timeframe that will allow the capacity of the cart to be utilized most efficiently.

Please take a few moments to familiarize yourself with our collection program. It is an easy and convenient way to demonstrate your commitment to recycling and protecting our environment.

Allowable Materials



PAPER AND CARDBOARD

- Flattened corrugated cardboard and paperboard (empty cereal boxes, empty detergent boxes, empty tissue boxes)
- Newspaper, flyers, inserts, junk mail, and envelopes
- Magazines, catalogues, telephone books, paperback books, hardcover books with covers and spine removed
- Brown paper bags, tissue roll cores, gift and packing paper, paper egg cartons
- Copier paper, NCR (no carbon required) paper

ALUMINUM & TIN

- Soft drink and beer cans
- Foil trays and pie plates
- Household tin cans (please rinse)

PLASTIC

- Containers with logo 1-7 
- Plastic bags, plastic drink bottles and plastic wrap

ASEPTIC PACKAGING & CARTONS

- Juice and milk cartons, milk jugs, tetra-pak containers, pouches

Sorry, we DO NOT ACCEPT the following;

- Glass
- Household garbage, organics, or hazardous waste
- Waxed, plasticized or food contaminated paper, cardboard cups or plastic plates
- Soiled tissues, napkins and paper towels
- Confetti shredded paper
- Styrofoam or other foam packing materials
- Auto parts or batteries

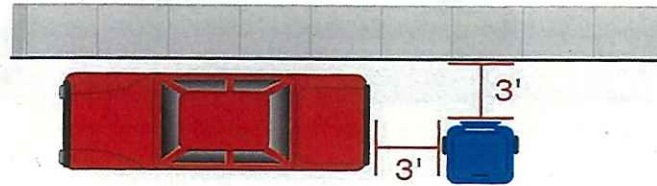
Ideal Location #1



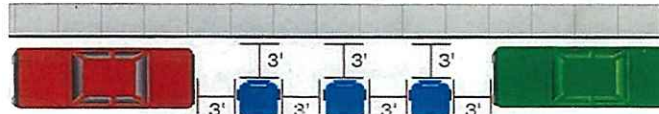
Snow Bank #2



Close to a Parked Car #3



Between Two Parked Cars #4



Park it

- **Park the cart for pickup by 7:00 a.m. on day of collection.**
- When there is a snow bank built up along the curb, make sure the container is out further than the snow as illustrated in drawing #2.

Point it

- Point lid arrows towards the street.
- Close lid.

Space it

- Ensure cart is 1 metre (3 feet) clear of all obstacles and not blocking traffic as illustrated in drawings #3 and #4.



General Guidelines

Use your recycle cart for the storage and collection of approved recyclables only.

1. **Do not bag or tie your recyclables.**
2. Do not pack material too tightly.
3. Wheel out your cart with its lid closed. You must be able to close the lid without packing the cart too tightly, otherwise the emptying of the cart will be more difficult.
4. **Place the cart roadside by 7:00 a.m. on collection day.**
5. Your recycling collection day won't change, but the collection time might, so please be sure to have your cart out by 7:00 a.m. on your collection day.
6. Return the emptied cart to your property before the end of the day.
7. Do not remove the cart from its assigned address.
8. Inform Loraas Disposal of any damage, vandalism or theft of the cart. It is important to note the serial number stamped on the cart placed at your residence.
9. **PLEASE—NO GARBAGE**

Only place items that are designated as approved recyclables within the recycle cart. Carts will be monitored and unacceptable items will be left curbside, or your cart will be rejected for collection.

Thank you for your cooperation and commitment to recycling.





2014 Roll-Out Cart Modified Pickup Days for Holidays

Table 1	2014 Stat Holiday	Roll-out Cart Pick-up Day
New Year's Day	Wednesday, January 1, 2014	Monday, December 30, 2013
Family Day	Monday, Feb 17, 2014	No Change
Good Friday	Friday, April 18, 2014	Monday, April 21, 2014
Victoria Day	Monday, May 19, 2014	No Change
Canada Day	Tuesday, July 1, 2014	No Change
Saskatchewan Day	Monday, August 4, 2014	No Change
Labour Day	Monday, September 1, 2014	No Change
Thanksgiving Day	Monday, October 13, 2014	No Change
Remembrance Day	Tuesday, November 11, 2014	No Change
Christmas Day	Thursday, December 25, 2014	Monday, December 29, 2014
Boxing Day	Friday, December 26, 2014	No Change
New Year's Day	Thursday, January 1, 2015	Monday, January 5, 2015

September 2014 Roll-Out Cart Garbage / Recycle Rotation

Table 2						
September 2014						
Sunday	Monday	Tuesday	Wednesday	Thursday	Friday	Saturday
	1	2	3	4	5	6
7	8	9	10	11	12	13
14	15	16	17	18	19	20
21	22	23	24	25	26	27
28	29	30				

Garbage Collection

Recycle Collection

Don't forget, your collection day will not change.